

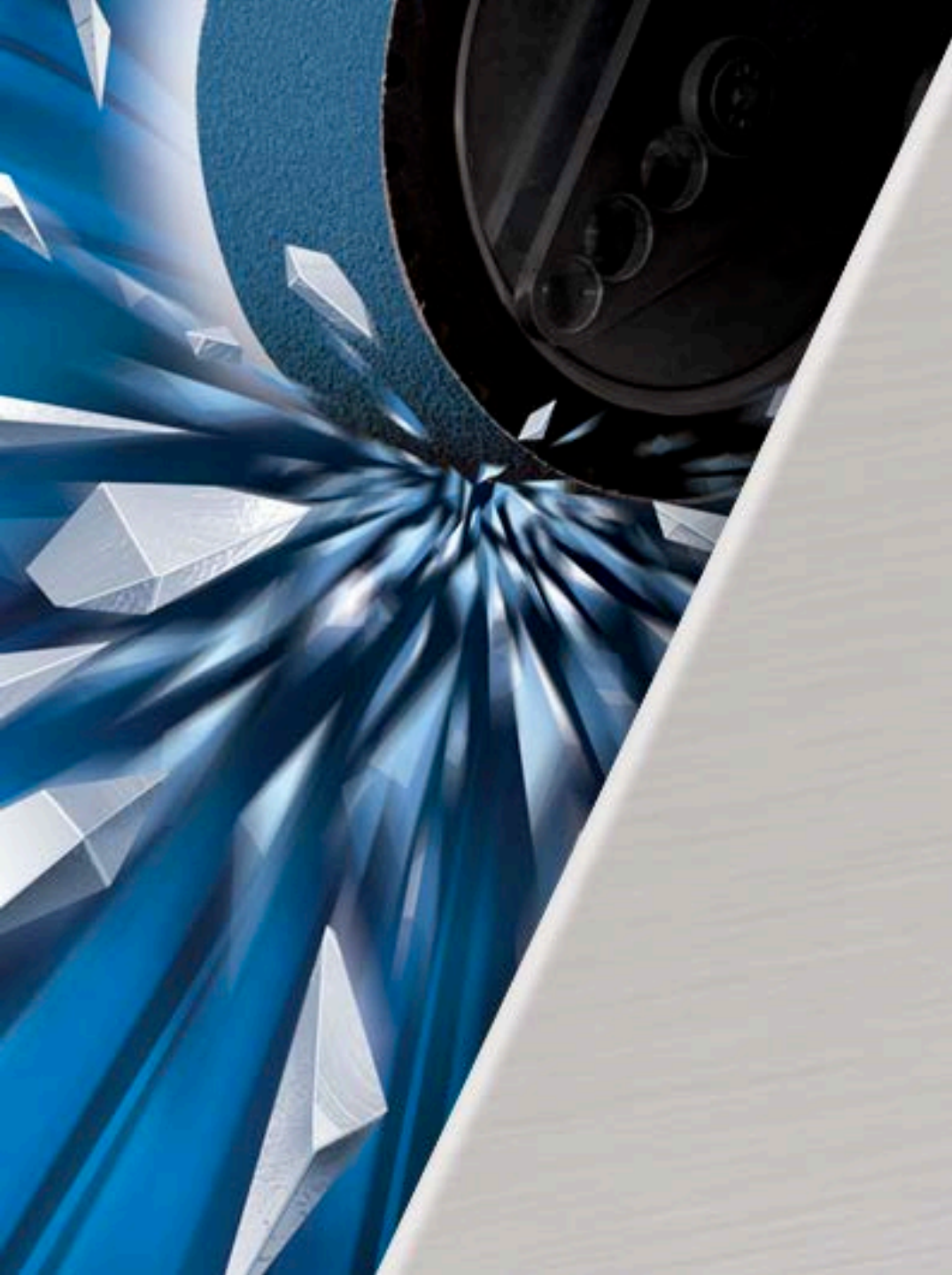
**For a sharp,  
aggressive cut**

**NORTON**

SAINT-GOBAIN

**BLUEFORCE**

**ABRASIVE TECHNOLOGICAL EXCELLENCE**



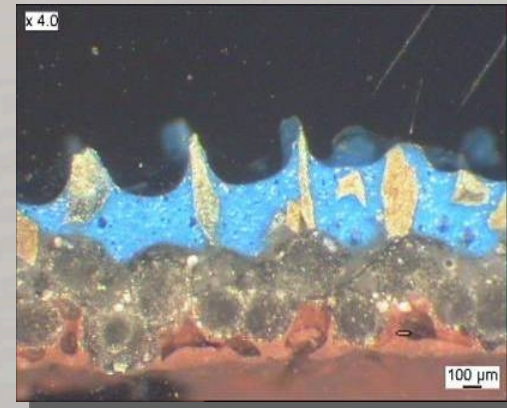
# LIJAS

## BLUE FORCE

- Specifically developed by Saint-Gobain's leading R&D facility for use on Stainless Steel.
- Combines new technology Norzon grit with optimised grain coverage for exceptional performance capabilities.
- YY weight backing, offering our strongest support, to provide up to a 60% improvement in cut rate, increasing parts processed in a cycle.
- Supersize option available, offering the most advanced cooling system, aiding cutting, reducing friction & protecting material integrity.



- New patented Norzon grain technology
- Needle-shaped, elongated grain creates micro-fracture lines – allowing constant renewal of sharp cutting edges.
- Electro static deposition of grain on backing optimises coverage to maximise efficiency.



- Metal fabrication & sheet metal
- Primary metal
- Aerospace
- General engineering
- Grinding
- Stock removal
- Shaping
- Semi-finishing
- Surface preparation



Features	Benefits
Optimized grain coverage	Maximises efficiency
Needle-shape grain engineered with micro-fracture properties	Consistent sharp cut for high material removal
Regeneration of sharp cutting edges	Longer belt life
YY weight polyester backing	Supports consistent aggressive cutting action



- Blue Force is available in a range of grits
  - R874 Blue Force P24 – P120
  - R876 Blue Force Supersize P24 – P80
- Made to order solutions.



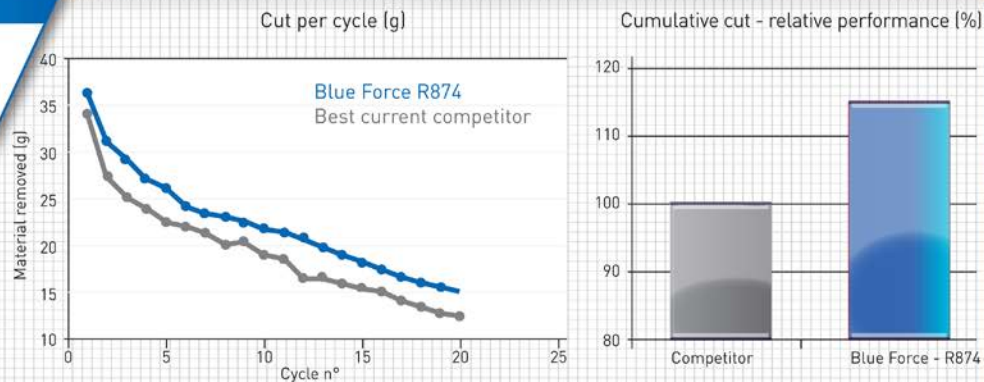
# Internal Testing: Material Removal

- Data below shows Blue Force cuts **17%** and **60%** more than competitor products, respectively.

## ROBOT: BLUE FORCE VS. COMPETITOR

Metal: Inox 304  
Material dimensions: 40mm x 10mm  
Grit size: P36  
Pressure: 1.5kg/cm<sup>2</sup>  
Contact wheel: 90 shore  
Belt speed: 30m/s

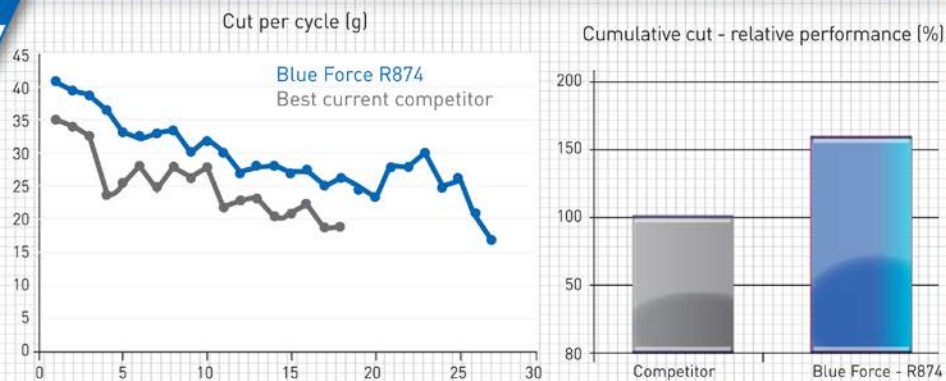
**RESULT:** This test shows Blue Force cut 17% more than the competitor product. Increase productivity, reduce cost and save time.



## BACKSTAND: BLUE FORCE VS. COMPETITOR

Metal: Inox 304  
Material dimensions: 50mm x 10mm  
Grit size: P36  
Pressure: 2.6kg/cm<sup>2</sup>  
Contact wheel: 90 shore  
Belt speed: 31m/s

**RESULT:** The test shows Blue Force increases cumulative cut by 60% against the competitor. Improve productivity, reduce cost and save time.





- With the Supersize layer, Blue Force showed a **29%** higher cumulative cut and cut **69%** more pieces before burn:

